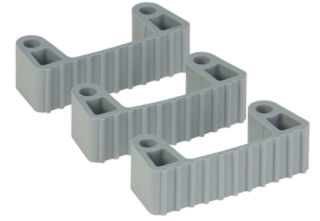


# 3 Spare part rubber bands for 1011x & 1013x

Gray



Item Number: 100288



3 Spare part rubber bands for 1011x Hygienic Hi-Flex Wall Bracket System & 1013x Grip Band Module.

## General Information

Color	Gray
Material	TPE Rubber
Country of Origin	Denmark

## Product Dimensions

Product Length/Depth	4.7 "
Product Width	3.9 "
Product Height	0.9 "
Net Weight	0.0948 lbs

## Packaging & Shipping Details

Box Quantity	20 Pcs.
Quantity per Pallet (80 x 120 x approx.180 cm)	2880 Pcs.
Quantity Per Layer (Pallet)	320 Pcs.
Box Length/Depth	11.5 "
Box Width	7.5 "
Box Height	6.9 "
Plastic Packaging (Recycling Symbol "4") LDPE per Pcs.	0.01 lbs
Cardboard Packaging (Recycling symbol "20" PAP) per Pcs.	0.01 lbs
Total Tare Weight	0.02 lbs
Gross Weight	0.119 lbs
Cubic Feet	0.0102 ft3
GTIN-13 Number	5705022036109
GTIN-14 Number (Box quantity)	15705028036094
Customs Tariff Number	39241000

## Compliance & Standard Details



## Item Number: 100288

Complies with (EC) 1935/2004 on food contact materials <sup>1</sup>	No
Complies with EU Regulation 2023/2006/EC of Good Manufacturing Practice	Yes
Complies with FDA Regulation CFR 21 <sup>1</sup>	Yes
Complies with UK 2019 No. 704 on food contact materials	Yes
Meets the REACH Regulation (EC) No. 1907/2006	Yes
Complies with California Proposition 65	Yes
Complies with Halal and Kosher	Yes
PFAS intentionally added	No

## Usage Limits

Recommended sterilisation temperature (Autoclave)	249.8 °F
Max. cleaning temperature (Dishwasher)	199.4 °F
Max usage temperature (food contact)	104 °F
Max usage temperature (non food contact)	176 °F
Min. pH-value in usage concentration	2 pH
Max. pH-value in Usage Concentration	10.5 pH

## Sustainability Details

Recycling Symbol "7", Miscellaneous Plastics	Yes
--	-----

New equipment should be cleaned, disinfected, sterilized, and any labels removed, as appropriate to its intended use, e.g. high risk vs. low risk food production areas, general hospital areas vs. intensive care units, before use.

1. See Declaration of Compliance for further details on food contact

